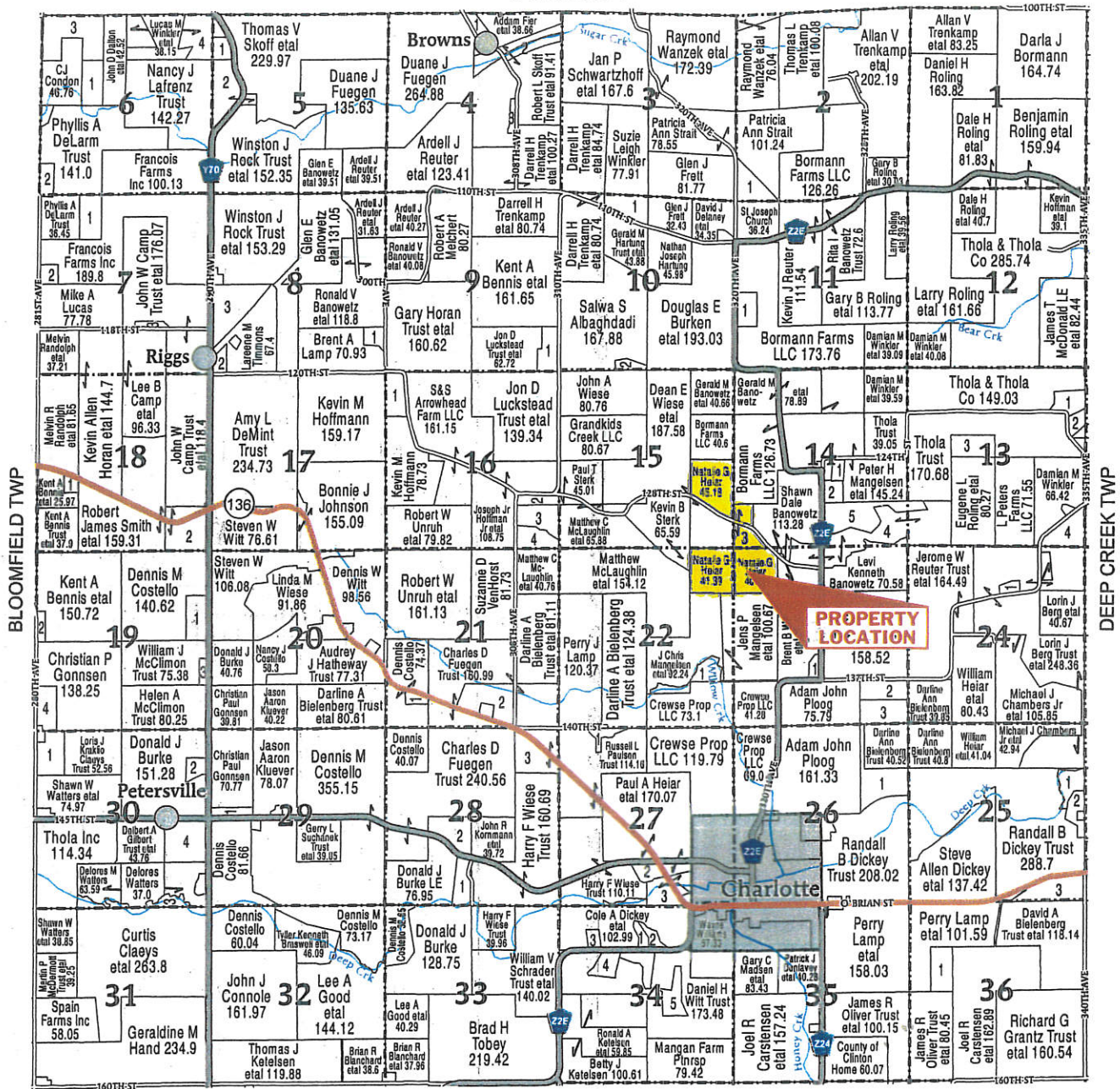


(Landowners)

JACKSON CO



WATERFORD TOWNSHIP

SECTION 2	1 FRETT, GLEN J	20.04
SECTION 4	1 ROLING, LAWRENCE S ETAL	7.63
	2 SCHWARTZHOFF, JAN ETAL	10.13
	3 HOLZRICHTER, BEVERLY E	5.03
SECTION 5	1 HENNINGSEN TRUST, DONALD M ETAL	8.89
	2 LAFRENZ TRUST, NANCY J	35.24
SECTION 6	1 WILMS, ROGER H ETAL	20.13
	2 RUFF, SALLIE J	10.2
	3 JOHNSON, LARRY G ETAL	48.39
	4 STERK TRUST, KEVIN BLAINE ETAL	42.7
SECTION 7	1 DELARM TRUST, PHYLLIS A	20.32
	2 LANGE, CHARLES M ETAL	7.97
	3 CAMP, LEE ETAL	5.02
SECTION 8	1 DELK, JOHN W ETAL	8.7
	2 ANDERSEN, FREDERICK P ETAL	7.18
	3 CAMP TRUST, JOHN W ETAL	42.65
SECTION 9	1 KLOFT, ALLEN W ETAL	17.98
SECTION 10	1 WINKLER, SUZIE LEIGH	20.87
	2 WIESE, JOHN A	5.83
SECTION 11	1 BORMANN, RONALD J ETAL	15.02
SECTION 12	1 IMMEL, JOSEPH E ETAL	14.06
	2 BLANCHARD, ROBERT NEAL	9.48
	3 BLESSINGTON, ROSE ETAL	19.83
	4 BERG, LORIN J ETAL	23.32
SECTION 14	1 MANGELSEN, JAN C ETAL	5.5
	2 LABARR, DAVID S ETAL	9.7
	3 HEAR, NATALIE G	21.24
	4 BANOWETZ, DARRYL R ETAL	101.85
	5 BANOWETZ, LEVI KENNETH	41.55
SECTION 16	1 HORAN TRUST, GARY ETAL	19.17
	2 RICKERTSEN, STEVE ETAL	9.64
	3 BURKHOLDER, DAVID L ETAL	22.3
	4 MCLAUGHLIN, MATTHEW ETAL	17.04
SECTION 18	1 SPAIN SR, TERENCE J ETAL	5
	2 COSTELLO, DENNIS M	39.94
SECTION 19	1 AHRENS, GARY L ETAL	20.63
	2 BATES, ROBIN L	5.93
SECTION 20	3 HEISHMAN, BRIAN D ETAL	5
	4 GONNSEN FARMS INC	18.7
SECTION 21	1 BRUSVEN, TODD JERALD	5.58
	2 BORMANN FARMS LLC	35.27
SECTION 22	1 PETERSEN, CLINT A ETAL	19.19
SECTION 23	1 DICKEY, STEVEN A	6.35
	2 HANSEN, JOEL K ETAL	19.88
	3 BIELENBERG TRUST, DARLINE ANN 23.78	
SECTION 24	1 CHRISTIANSEN, COREY A ETAL	5.14
SECTION 25	1 PETERSEN, JUDITH A	13.69
	2 ANDERSON, JUDITH A	11.67
	3 BIELENBERG TRUST, DAVID A ETAL 30.37	
SECTION 26	1 BIELENBERG TRUST, DARLINE	35.16
SECTION 27	1 TRENKAMP, TRAVIS ETAL	7.07
	2 BURKEN TRUST, BRADLEY J	10.72
	3 DICKEY, COLE A ETAL	24.1
SECTION 28	1 BURKE, DONALD J	17.69
	2 KORNMAN, JOHN ETAL	26.82
SECTION 29	1 TRACY, RICHARD R	10
SECTION 30	1 COSTELLO, JOHN LEO ETAL	24.35
	2 BROADFOOT, KEVIN ETAL	8.95
	3 CLAEYS, CURTIS D ETAL	15.63
	4 IMMACULATE CONCEPTION CHURCH	39.44
SECTION 34	1 BURKEN, ANTHONY J ETAL	5.28
	2 BLANCHARD, BRENT M ETAL	6.41
	3 JOHNSON, RYAN D	5.5
	4 MCALEER, JOANNE	12.37
	5 DIEDRICH, DUANE C ETAL	29.45
SECTION 36	1 LAMP, PERRY J ETAL	20.22

