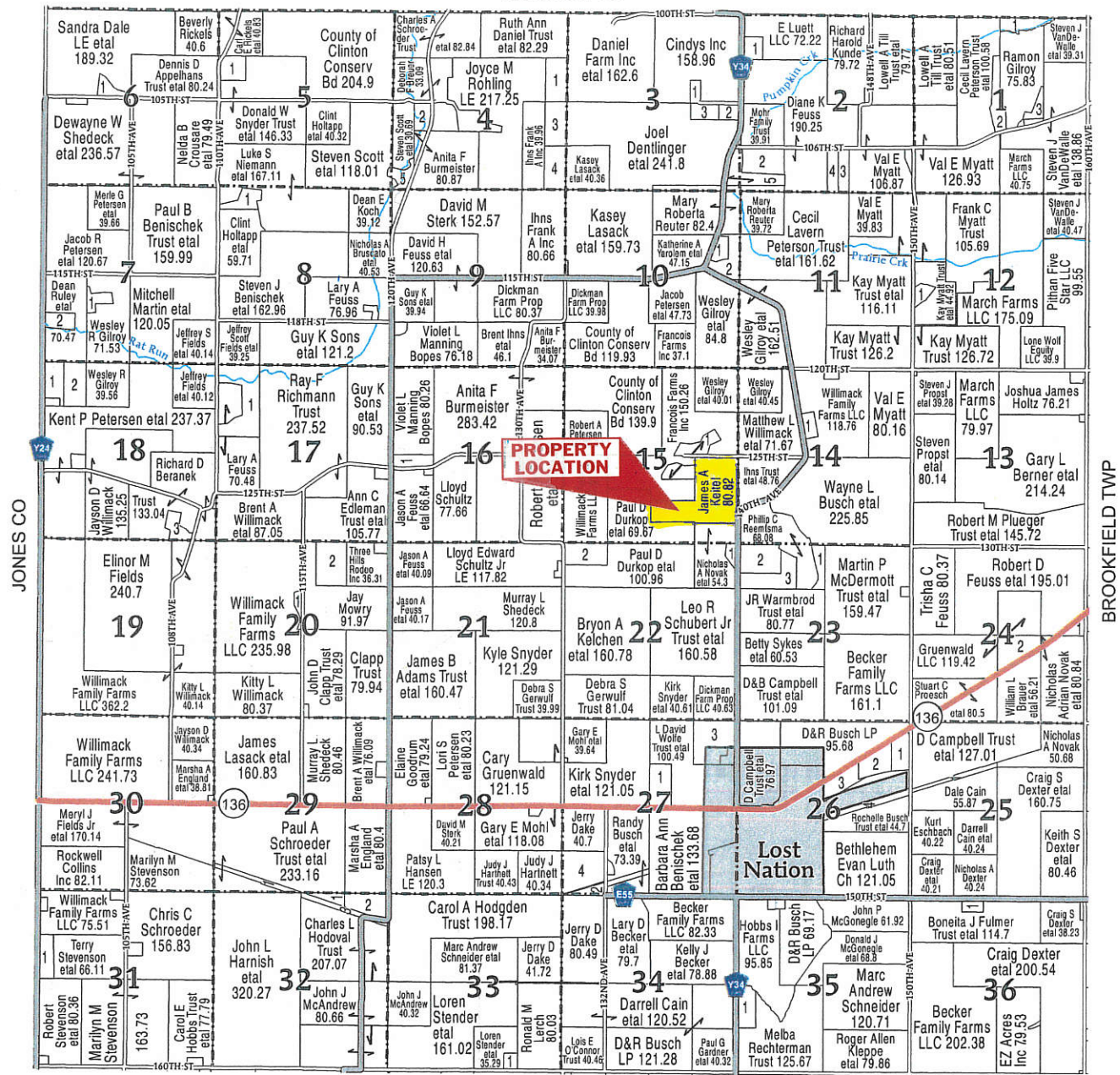


(Landowners)  
JACKSON CO



LIBERTY TWP

SHARON TOWNSHIP

SECTION	LANDOWNER	ACRES
<b>SECTION 1</b>		
1	WILCOX, CONNIE J ETAL	12.59
2	DRISCOLL, MICHAEL C ETAL	15.73
3	MEYER, NICOLE R	7.31
<b>SECTION 2</b>		
1	BUSCH, ARNOLD W ETAL	10.36
2	DENTLINGER, JOEL ETAL	22.99
3	PETERSON TRUST, CECIL LAVERN ETAL	10.05
4	SCHULTZ TRUST, WAYNE L ETAL	10.04
5	ROLING, VIRGIL G	22.4
<b>SECTION 3</b>		
1	CHRISTIANSSEN, JERIMIAH P ETAL	5.01
2	MOHR FAMILY TRUST	7.5
3	BROWN, CHIP W ETAL	10
<b>SECTION 4</b>		
1	DANIEL FARM INC	19.97
2	HINZ, JED D	10.83
3	DENTLINGER, JOEL ETAL	20.15
4	LASACK, KASEY ETAL	19.83
5	MARTIN, ADAM	9.6
<b>SECTION 5</b>		
1	MOORE, CLIFFORD A ETAL	13.76
<b>SECTION 6</b>		
1	THOMAS, DANA	8.39

SECTION	LANDOWNER	ACRES
<b>SECTION 7</b>		
1	BLOCK, SUSANNAH M	7.85
2	BERANEK, DARRELL L ETAL	10.5
<b>SECTION 8</b>		
1	HOLTAPP, KATHRYN A	11.68
<b>SECTION 10</b>		
1	WILLIAMSON, RUSSELL J	8.12
2	PETERSON TRUST, CECIL LAVERN ETAL	18.09
<b>SECTION 12</b>		
1	MYATT, VAL	6.79
<b>SECTION 14</b>		
1	SHANNON, RICK L ETAL	8
<b>SECTION 15</b>		
1	DEVORE, JAMES ETAL	21.83
<b>SECTION 16</b>		
1	FEUSS, GARY A	12.37
<b>SECTION 17</b>		
1	FIELDS, JEFFREY SCOTT ETAL	44.71
<b>SECTION 18</b>		
1	WILLMACK FAMILY FARMS LLC	17.2
2	RULEY, DEAN ETAL	20.62
3	BERANEK, RORIE	10.43

SECTION	LANDOWNER	ACRES
<b>SECTION 20</b>		
1	STOLL, JASON M ETAL	5
2	EDEMAN TRUST, ANN C ETAL	28.02
<b>SECTION 22</b>		
1	KEITEL, JAMES A	5.28
2	WILLMACK FAMILY FARMS LLC	20.3
<b>SECTION 23</b>		
1	BUSCH, WAYNE L ETAL	8.98
2	GRUENWALD, THOMAS R ETAL	25.82
3	BERRY BOYS LLC	25.84
<b>SECTION 24</b>		
1	STANTON, MAURINE ELAINE	6.45
2	BURKE, JOHN RAMON	23.3
<b>SECTION 25</b>		
1	CAIN, DALE T	7.7
<b>SECTION 26</b>		
1	CHARLAN, SANDRA F	13.85
2	CLARENCE CO-OP CO	15.25
3	RIVER VALLEY CO-OP	13.99
4	CITY OF LOST NATION	11.12
<b>SECTION 27</b>		
1	ZELLER LE, SUSAN E ETAL	20.18
2	DAKE, KERRY	10.97
3	DICKMAN FARM PROP LLC	35.41
4	DAKE, KERRY LAWRENCE ETAL	33.83

SECTION	LANDOWNER	ACRES
<b>SECTION 29</b>		
1	SCHROEDER FARM LLC	7.94
<b>SECTION 31</b>		
1	STEVENSON, TERRY J ETAL	15.57
<b>SECTION 32</b>		
1	SCHROEDER TRUST, PAUL A ETAL	5.84
2	ENGLAND, MARSHA A ETAL	19.07
3	HODOVAL TRUST, CHARLES	9.59
<b>SECTION 33</b>		
1	STENDER, LOREN	5
<b>SECTION 35</b>		
1	TOWN OF LOST NATION	17.28
<b>SECTION 36</b>		
1	FULMER, BONEITA J	6

